



OBRONZE.COM
ORNAMENTAL BRONZE LIMITED

2018 CATALOGUE

ABOUT US

Ornamental Bronze Ltd. is a non-ferrous foundry located in Richmond, BC, founded in 1928. Our memorial division offers cemetery markers, niche plates, plaque matching, graphic design, custom sculpting, dedication plaques, bench plaques, and more.

Quotes and design recommendations are available at no cost.



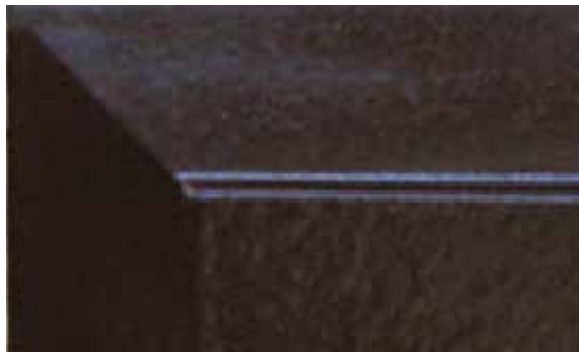
EDGE DESIGNS



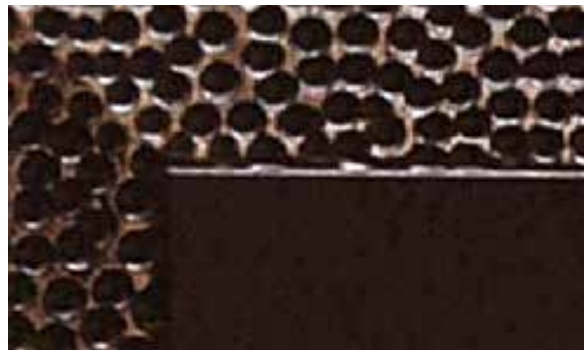
STRAIGHT CUT



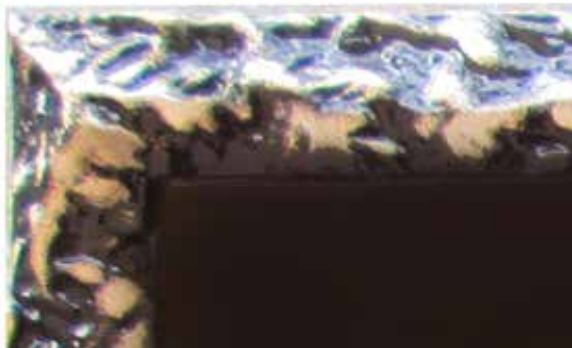
POLISHED BEVEL



PLAIN



HAMMERED



PINE



FOLKSAU



ROCK



WOODGRAIN

PAINT COLOURS

LIGHT
BROWN

DARK
BROWN

BLACK

BURGUNDY

LUCKY
RED

HUNTER
GREEN

EGYPTIAN
BLUE

ROYAL
BLUE

BABY
BLUE

DEEP
PURPLE

LILAC

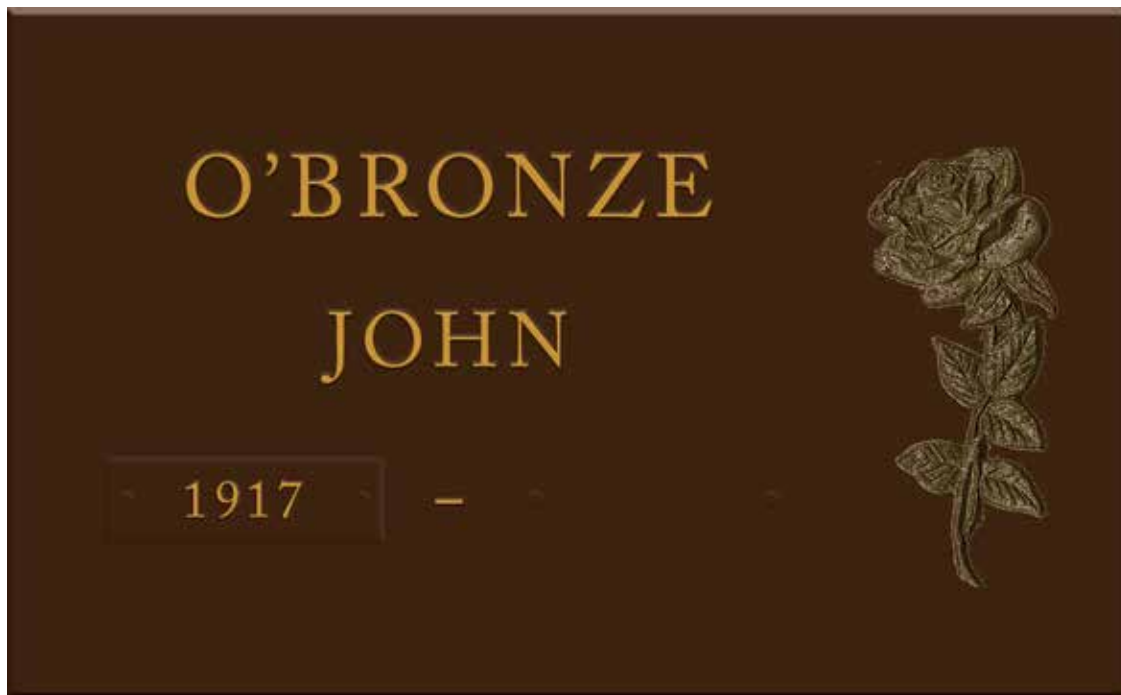
POWDER
PINK

COFFEE
CREAM

CUSTOM LINE MARKERS

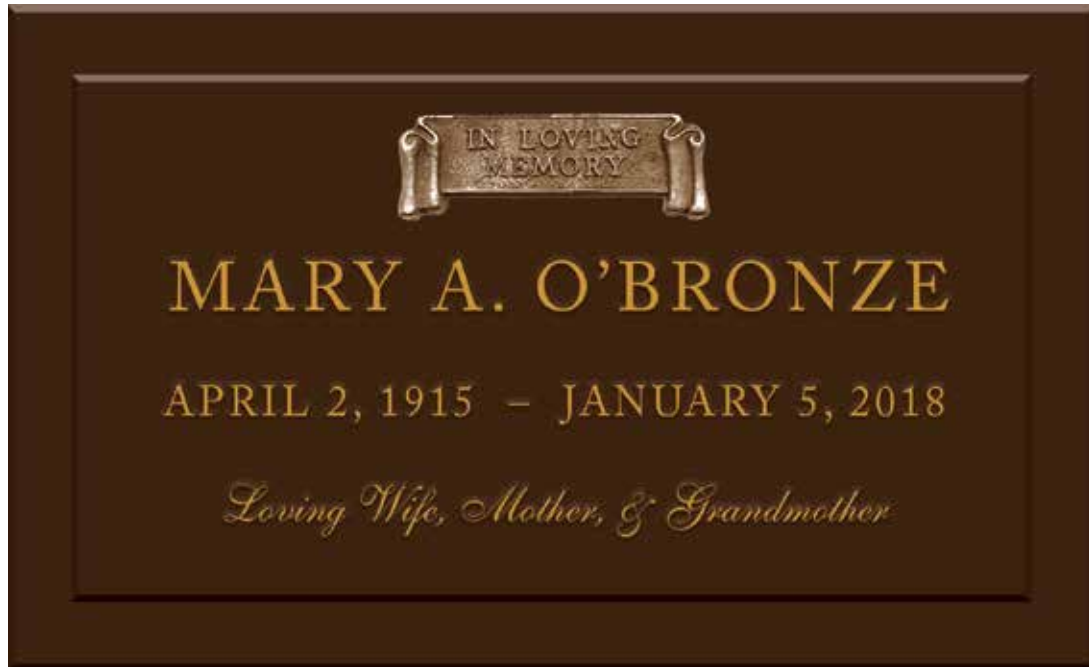


8"x12" POLISHED BEVEL EDGE
ADOBE CASLON PRO, FLAT LETTERING
GOTHIC CROSS



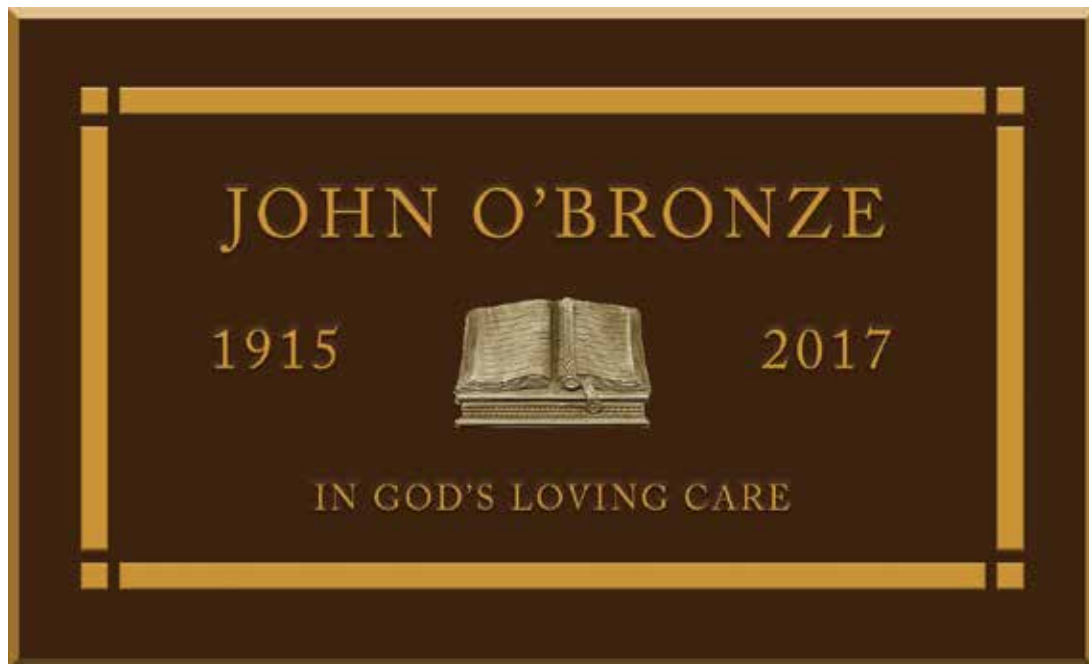
10"x16" STRAIGHT CUT EDGE
ADOBE CASLON PRO, FLAT LETTERING
DATE TABS, SOLITARY ROSE

CUSTOM LINE MARKERS



12"x20" PLAIN EDGE

ADOBE CASLON PRO & ARMALLEGRO, FLAT LETTERING
IN LOVING MEMORY SCROLL



12"x20" PURITAN, POLISHED BEVEL EDGE

ADOBE CASLON PRO, FLAT LETTERING
BIBLE ON PEDISTAL

CUSTOM LINE MARKERS



12"x24" HAMMERED EDGE

ADOBE CASLON PRO, FLAT LETTERING

SMALL ITALIAN ROSES (R & L FACING), TOGETHER FOREVER SCROLL



12"x24" PINE EDGE

ADOBE CASLON PRO, FLAT LETTERING

DATE TABS, ANGELS (L & R FACING), CELTIC CROSS

CUSTOM LINE MARKERS



12"x24" ROCK EDGE

ADOBE CASLON PRO, FLAT LETTERING (REGULAR & ITALIC)
MAPLE LEAF PAIR



12"x24" HAMMERED EDGE

ADOBE CASLON PRO, FLAT LETTERING
MAPLE CLUSTER, TILL WE MEET AGAIN SCROLL

CUSTOM LINE MARKERS



12"x24" HAMMERED EDGE

ADOBE CASLON PRO, FLAT LETTERING
PRAIRIE WHEAT, TILL WE MEET AGAIN SCROLL



12"x24" STRATFORD PLAIN EDGE

ADOBE CASLON PRO, FLAT LETTERING
LETTERED PLATES

CUSTOM LINE MARKERS



14"x24" HAMMERED EDGE WITH VASE
ADOBE CASLON PRO, FLAT LETTERING
PRAIRIE WHEAT



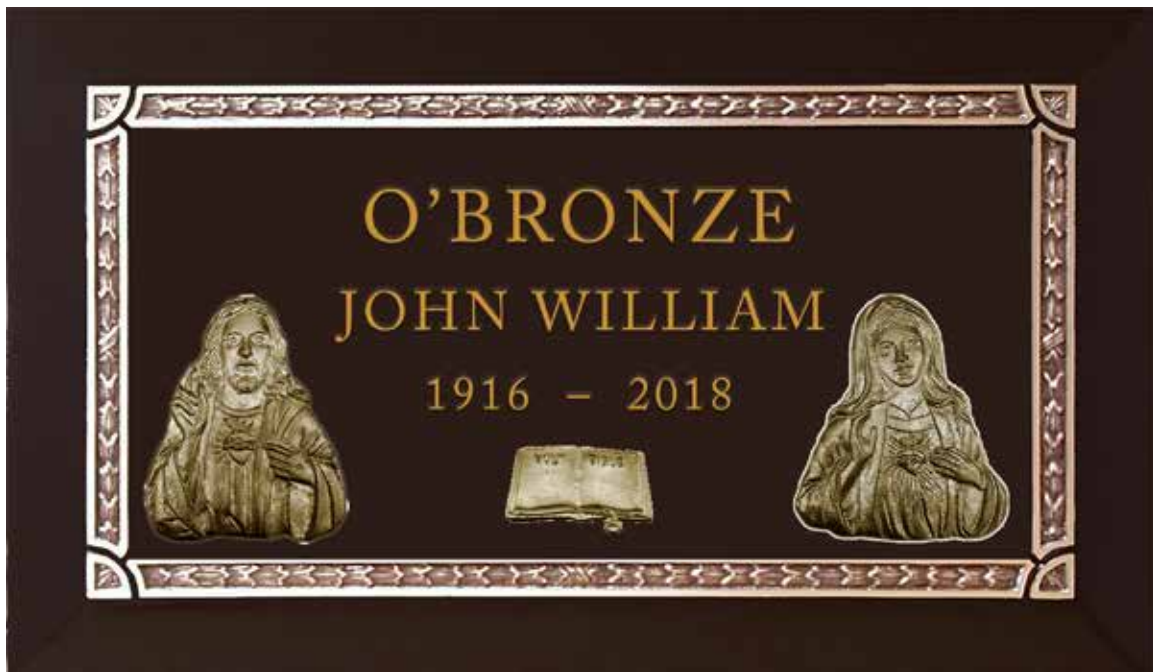
16"x28" WATER WONDERLAND, PLAIN EDGE
ADOBE CASLON PRO, FLAT LETTERING
TOGETHER FOREVER WREATH

CUSTOM LINE MARKERS



16"x28" GOTHIC PLAIN EDGE

ADOBE CASLON PRO & ARMALLEGRO, FLAT LETTERING
PLAIN CROSS, MARY (B)



16"x28" GEORGIAN PLAIN EDGE

ADOBE CASLON PRO, FLAT LETTERING
JESUS, BLESSED MOTHER, HOLY BIBLE

CUSTOM LINE MARKERS



16"x28" STRATFORD PLAIN EDGE

TIMES NEW ROMAN, FLAT LETTERING
ROSARY (A), LETTERED PLATE + BLANK



16"x28" HEAVENLY GATE, HAMMERED EDGE

ADOBE CASLON PRO & KAI SHU, FLAT LETTERING
PRAYING HANDS (C)

CUSTOM LINE MARKERS



16"x28" WOODGRAIN EDGE

ADOBE CASLON PRO, FLAT LETTERING

MAPLE LEAF CLUSTER (LARGE, R & L FACING), LETTERED PLATE + BLANK



16"x24" FOLKSAU EDGE

ADOBE CASLON PRO & KAI SHU, FLAT LETTERING

LOTUS (SMALL)

ENHANCED LINE MARKERS



8.5"x12.5" URN PLAQUE, PLAIN EDGE
HANDSET, FLAT LETTERING



12"x20" MOUNT CHEAM, HAMMERED EDGE
HANDSET, FLAT LETTERING

ENHANCED LINE MARKERS



12"x24" ROSARY, HAMMERED EDGE
HANDSET, FLAT LETTERING



12"x24" IVY, HAMMERED EDGE
HANDSET, FLAT LETTERING
CELTIC CROSS

ENHANCED LINE MARKERS



16"x28" CASTLE IN THE SKY, PLAIN EDGE

HANDSET, FLAT LETTERING
TOGETHER FOREVER SCROLL



16"x28" MONOGRAM ROSE, PLAIN EDGE

HANDSET, FLAT LETTERING

ENHANCED LINE MARKERS



16"x28" LAUREL, PLAIN EDGE
HANDSET, FLAT LETTERING

Please note that **additional charges may apply** when matching your memorial with an existing marker. Please send a photo or rubbing with your layout request and indicate on your order if you would like an exact match.

NICHE PLATES



SIMPLICITY NICHE PLATE, TRI-SCROLL PLATES
3"x9"



POPPY NICHE PLATE
3"x9"



IVY NICHE PLATE
3"x9"

NICHE PLATES



CLASSIC NICHE PLATE
3.25"x10"



**HI-COUNTRY ROSE NICHE PLATE,
DATE TABS**



SOLITARY ROSE NICHE PLATE
3"x9"

NICHE PLATES



NICHE WREATH

6"x9"
7"x10"



NICHE WREATH WITH VASES, DATE TABS

7.5"x11"

VASES



ORNAMENTAL VASE



HAMMERED VASE

SCROLL PLATES



SCROLL PLATE (A)

1.75" x 5.25"
1.875" x 5.75"
2.5" x 7.5"
3.25" x 9.25"



SCROLL PLATE (B)

3" x 8"
4" x 8.5"



TRI-SCROLL (A)

2.875" x 5.875"



TRI-SCROLL (B)

2.875" x 8.25"

Your layout specialist will recommend the size of scroll plate required for the size of marker you have chosen. Plates are also available with a straight cut or polished bevel edge **in any size.**

FIXED EMBLEMS

ANIMALS



BEAR
2.3"x3.5"



BIRD
2.75"x2.8"



CANARY/SPARROW
2"x2.9"



BUFFALO
5"x7"



BULL HEAD
4.5"x3.9"



BULL & RIDER
8"x3.9"



BUTTERFLY (A)
1.75"x1.5"



BUTTERFLY (B)
2.25"x1.4"

FIXED EMBLEMS

ANIMALS



BUTTERFLY
2.25"x1.4"



CAT (A)
3"x2.4"



CAT (B)
2"x2"



DEER (A)
3.75"x2.3"



DEER (D)
2"x1.315"



DEER (E)
1.5"x3"
R & L FACING



DEER HEAD
2"x1.6"



ELK HEAD
2.75"x2.3"



RAM HEAD
2.75"x2.2"

FIXED EMBLEMS

ANIMALS



DOG HEAD (A)
3"x2.4"



DOG HEAD (C)
2.4"x2.24"



DOG HEAD (D)
2"x2.4"



SHELTIE/COLLIE HEAD
3.4"x4.3"



DOG SITTING
3"x2.014"



TERRIER (LARGE)
3"x2.809"



TERRIER
4.7"x6"



DOVE (SMALL WITH
OLIVE BRANCH)
2.13"x3.75"



DOVE IN FLIGHT
1.717"x1"

FIXED EMBLEMS

ANIMALS



DOVE (LARGE WITH
OLIVE BRANCH)
6"x5.866"



DOVES
3.7"x4.5"



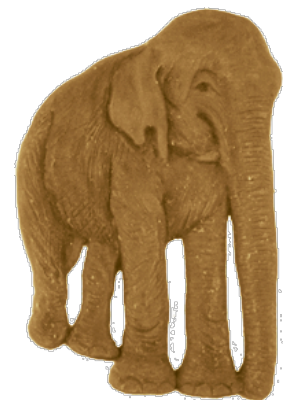
DOVES IN HEART
4"x4.2"



EAGLE (C)
5.5"x3.4"



EAGLE (D)
4.4"x5"



ELEPHANT
4"x2.7"



FROG
2"x2.25"



KANGAROO
3.75"x2.383"



FISH (B)
4.3"x7.25"

FIXED EMBLEMS

ANIMALS



FISH (E)
2"x2.88"



FISH LEAPING
2.5"x3.5"



DUCK
2.17"x6"



DUCKS IN POND
2.185"x6"



FLOCK OF GEESE
2.25"x2.523"



DUCK IN FLIGHT
1.96"x1.75"



HERON
4.75"x3.2"



GOOSE IN FLIGHT
3.97"x4.5"

FIXED EMBLEMS

ANIMALS



SEAGULL IN FLIGHT
2.06"x4.25"



OWL
3"x1.8"



HORSE HEAD (B)
4.4"x4"



HORSE TROTTER
2.9"x5"



HORSE REARING
8"x4.44"



HORSE
7"x4.6"



HORSE GRAZING
4.514"x7.5"



HUMMINGBIRD (A)
2"x2.91"



HUMMINGBIRD (B)
2.855"x2.875"

FIXED EMBLEMS

ANIMALS



HUMMINGBIRD WITH
FLOWERS
3.7"x3.5"



HUMMINGBIRD WITH
BABIES
5.8"x4.25"



LAMB
2"x3.13"



SHEEP & LAMB
2.5"x2.7"



RABBIT (A)
3"x3.25"

Did you know that we offer custom emblems? Call or email us for a quote. If there is an emblem you would like to have for your memorial that you do not see here please contact us as our selection is wider than what is shown in this catalogue.

FIXED EMBLEMS

CHILDREN



BLOCKS
3.44"x3.1"



BOW
1.25"x1"



LITTLE BO PEEP
6.125"x4.26"



BOY
3.5"x1.7"



CHILD KNEELING
2.9"x1.5"



GIRL KNEELING
3"x1.5"



GIRL PRAYING
5.5"x4.83"



LITTLE BOY BLUE
4.75"x4.69"



TEDDY BEAR (A)
5.1"x3.9"

FIXED EMBLEMS

CHILDREN



TEDDY BEAR (B)
5.1"x3.9"
R & L FACING



UNICORN
6"x6.103"



CARTOON MOUSE
3.125"x2.705"



CHERUB
2.35"x2.25"



CHERUB WITH BIRDS
3.25"x6"



WINNIE THE POOH
8.25"x3.94"



CHILD WITH RABBIT
2.75"x2.6"

Did you know that we also have a large selection of scalable graphic emblems? Please visit our website/online memorial designer to see our selection or contact your layout specialist to learn more.

FIXED EMBLEMS

CRESTS



ARTILLERY
1.9"x2.5"



BC REGIMENT (A)
1.75"x1.7"



CANADIAN ARMY
2.5"x1.9"



CANADIAN MERCHANT
NAVY CREST
5.8"x4.8"



RCAF
3.75"x2.7"



EASTERN STAR (A)
2"x2"



KNIGHTS OF COLUMBUS
4.758"x5"



MASONIC (A)
3.25"x3"



MASONIC (B)
1"x.992"

FIXED EMBLEMS

CRESTS & FLAGS



NAVY
3"x2.2"



R.A.F. CREST
2.43"x6.25"



ROYAL CANADIAN
CORP. OF SIGNALS
1.75"x1.781"



SALVATION ARMY
1.5"x1.3"



SHRINERS
3"x3.16"



HIGHLANDER
2.25"x2.3"



LEGION
3.25"x2"



LIONS CLUB
3.25"x2"



ROTARY
3.2"x3.17"

FIXED EMBLEMS

ETHNIC



DECORATIVE CORNER
4.5"x4.5"
L & R FACING



CHINESE DRAGON
4.25"x7"
L & R FACING



PHOENIX (A)
4.25"x7"
L & R FACING



PHOENIX (B)
5"x3.76"
L & R FACING



DRAGON
2.6"x3.9"
L & R FACING



LION
5"x4.095"
L & R FACING



CHINESE SUN
2.8"x2.8"



ETERNAL LIFE
4.5"x4.4"



FIRST NATIONS ORCA
7"x4.9"



WATER RIPPLES
.404"x2"



FIRST NATIONS EAGLE
1.5"x3.14"

FIXED EMBLEMS

FLOWERS & PLANTS



ASTER
4.5"x2.375"



CARNATION
7.5"x2.014"



DAFFODIL (A)
4"x2"



DAFFODIL (B)
3"x2.4"



CLOVER (A)
2.5"x2.3"



CLOVER (B)
1.7"x1.5"



CLOVER (F)
3"x2.4"
R & L FACING



DAISY
3.75"x3.67"



SINGLE DOGWOOD
2.6"x3"



SMALL DOGWOOD
3.75"x3.4"
R & L FACING

FIXED EMBLEMS

FLOWERS & PLANTS



LARGE DOGWOOD
8.375"x7.4"
R & L FACING



DOGWOOD
4.75"x2.7"
R & L FACING



DOGWOOD WITH STEM
5.5"x3"
R&L FACING



DOGWOOD WITH LEAVES
2.9"x2.9"
R & L FACING



EDELWEISS
7.5"x4.547"



FLOWERS
WITH BUTTERFLY
6.25"x3.39"



GRAPES
3"x2.464"



BASKET OF FLOWERS
4.25"x2.8"



FORGET ME NOTS
4"x3.4"
R&L FACING

FIXED EMBLEMS

FLOWERS & PLANTS



LILY (A)
6"x6"



LILY HEAD
2.5"x2.3"



LILY (C)
10"x4.63"



LARGE LOTUS
3.3"x5.5"



SMALL LOTUS
2"x3.067"



UPRIGHT LOTUS
5.5"x3.771"



WATER LILY
4.93"x6"



MAPLE LEAF
2.75"x2.411"

FIXED EMBLEMS
FLOWERS & PLANTS



MAPLE CLUSTER
4"x1.8"
L & R FACING



LARGE MAPLE CLUSTER
6"x4"
L & R FACING



MAPLE LEAF PAIR
4"x3.56"
L & R FACING



PANSIES
3.375"x2.35"



OAK LEAVES
7"x3.6"



SUNFLOWER (A)
2.75"x1.9"



SUNFLOWER (B)
3.4"x3.375"



PINE CONE (B)
3.125"x2.43"
L & R FACING



PINE CONE (C)
4.335"x5.375"
L & R FACING

FIXED EMBLEMS

FLOWERS & PLANTS



RHODODENDRON
3.551"x4.75"



POPPY
(A) 2"x1.902"
(C) 3.6"x3.5"



POPPY (B)
3.5"x1.817"



ROSE HEAD
2.7"x3.25"



ROSEBUD
3.75"x2.612"



WILD ALBERTA ROSE
6"x4.3"



AMERICAN BEAUTY ROSE
5"x3.361"



SMALL ROSE
4.25"x2.131"
R & L FACING



ROSE (A)
4"x1.8"
R & L FACING

FIXED EMBLEMS

FLOWERS & PLANTS



ROSE (B)
1.8"x2"



ROSE (C)
4.75"x2.8"



ROSE (D)
1.5"x.74"



CORNER ROSE BUD
3"x3.775"
R & L FACING



SOLITARY ROSE
6.25"x2.67"
R & L FACING



ROSE SPRIG
9.5"x4"
R & L FACING



LARGE ITALIAN ROSE
9.25"x8.2"
R & L FACING



SMALL ITALIAN ROSE
6.25"x4.7"
R & L FACING



SPRIG OF ROSE
9"x5.8"
R & L FACING

FIXED EMBLEMS

FLOWERS & PLANTS



TALL ROSE
9"x2.99"
L & R FACING



ROSE (F)
2.2"x9"
L & R FACING



LARGE ROYAL ROSE
9"x3.75"
L & R FACING



ROSE (H)
6.5"x3"



SMALL ROYAL ROSE
5.5"x5.3"



ROSE WITH STEM
3.5"x4.545"



THISTLE (A)
4.75"x3.65"



THISTLE (B)
3.75"x3.7"



THISTLE (C)
3"x2.2"



EVERGREEN TREES
5"x4.8"

FIXED EMBLEMS

FLOWERS & PLANTS



EVERGREEN TREES
7.75"x5.4"
R & L FACING



TALL TREES
7"x2.24"



TULIP
4.75"x3"
R & L FACING



TULIP CLUSTER
5"x4.36"



WHEAT
6.5"x3.923"
R & L FACING



WHEAT BUNDLE (B)
6.6"x5.4"



CURVING WHEAT
4.5"x3"
R & L FACING



SMALL WHEAT (A)
2.8"x2.2"



SMALL WHEAT (B)
2.8"x1.11"

FIXED EMBLEMS

MISCELLANEOUS



CARDS
3.88"x3.44"



COWBOY BOOT
2.5"x2.2"



DANCERS
4"x3"



TENT
2.125"x3.272"



COMPASS
2.5"x2.5"



LIGHTHOUSE SCENE
3.63"x4.571"



ANCHOR (A)
1.25"x.8"



ANCHOR (B)
2.25"x1.9"



ANCHOR (C)
4.6"x4.2"

FIXED EMBLEMS

MISCELLANEOUS



MUSICAL SCALE
3.031"x8.25"



VIOLIN
1.4"x3.115"



GUITAR
2.5"x6.5"



PIANO
2"x2"



SAXOPHONE
3.5"x2.122"



TRIO OF HEARTS
2.125"x4.19"



HORSESHOE
2.9"x2.671"



TIRE
3"x2.42"

FIXED EMBLEMS

OCCUPATIONS



AXE
2.75"x0.8"



CROSSED TOOLS
3.8"x4.46"



DUMP TRUCK (A)
5.5"x8.72"



DUMPTRUCK (B)
3.38"x4.46"



BULLDOZER
4.25"x6.4"



TRACTOR
2.47"x4.25"



TRACTOR TRAILER
2.5"x4.16"



HAMMER
3"x1.864"



TROWEL
.75"x2"



NURSE CAP
2.15"x4.5"



FISHERMAN IN BOAT
4.25"x8.5"

FIXED EMBLEMS

RELIGIOUS



ANGEL BOY
5.5"x8.72"



ANGEL GIRL
4"x3.7"



ANGEL ON KNEES
6"x3.5"



ANGEL PRAYING (A)
3"x2.2"



ANGEL RIGHT FACING
6.5"x3.6"



ANGEL LEFT FACING
6.5"x3.6"



ANGEL WITH HARP
4"x2.3"



BIBLE AND CHALICE
4"x4.8"



BIBLE ON PEDESTAL
3.63"x5.5"

FIXED EMBLEMS

RELIGIOUS



BIBLE (WITH LETTERING)
2.13"x3.58"



BIBLE (W/O LETTERING)
2.13"x3.57"



CROSS & BIBLE
3.125"x3.5"



CROSS/BIBLE WITH FLOWERS
4.38"x4"



CROSS & ROSE
6"x3.3"



CROSS (A)
4.5"x3.2"
CROSS (B)
2.9"x2"



GOTHIC CROSS/ROSARY
5.5"x3.456"



GOTHIC CROSS (A)
6"x4.22"



GOTHIC CROSS (B)
3"x2.14"

FIXED EMBLEMS

RELIGIOUS



CROSS & CROWN
4.63"x3.015"



CELTIC CROSS (A)
3.75"x2.1"



CELTIC CROSS (B)
4"x3"



VETERAN'S CROSS
2.5"x1.5"



LUTHERAN CROSS
3.25"x2.204"



CRUCIFIX (A)
4"x2.3"
CRUCIFIX (C)
7.5"x4.14"



CRUCIFIX (B)
3.5"x1.9"



GREEK ORTHODOX CROSS
3"x2"

FIXED EMBLEMS

RELIGIOUS



ST. FRANCIS
8"x4.35"



ST. ANTHONY
8.5"x3"



MARY (A)
9"x3.2"



MARY (B)
8"x3.8"



MARY (C)
4.75"x3.7"



MADONNA/CHILD (A)
4.75"x3.1"



MADONNA/CHILD (B)
6.5"x3.535"



MADONNA/CHILD (B)
6.5"x3.535"



SACRED HEART (B)
9"x5.4"



SACRED HEART (A)
7.25"x4.1"



SACRED HEART (MARY)
6.25"x5.5"



SACRED HEART (JESUS)
6.25"x5.5"



JESUS WITH
CROWN OF THORNS
4.7"x4"



LADY OF PERPETUAL HELP
5"x4.25"



JESUS & THE CHILDREN
5.5"x5.23"



SHEPHERD
9"x6.33"



MARY IN FRAME
5"x2.77"



JESUS IN FRAME
5"x2.77"

FIXED EMBLEMS

RELIGIOUS



HOLDING HANDS (B)
2.4"x3.75"



PRAYING HANDS (A)
6.5"x4.3"
R & L FACING



PRAYING HANDS (B)
3"x2.5"
R & L FACING



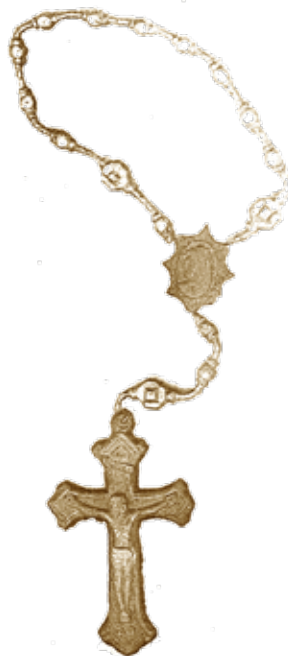
PRAYING HANDS/ROSARY (A)
4"x4"
PRAYING HANDS/ROSARY (B)
2.5"x2.3"
R & L FACING



ROSARY (B)
7.3"x12"



ROSARY (A)
6.25"x3.3"



LARGE ROSARY
11"x4.834"



ROSARY IN HEART
2.56"x2.24"

FIXED EMBLEMS

SCROLLS



ALWAYS REMEMBERED (A)
1.1"x5"



ALWAYS REMEMBERED (B)
1.044"x5.25"



FOREVER IN OUR HEARTS
1.56"x6.5"



IN GOD'S LOVING CARE (A)
1.25"x5.22"



IN LOVING MEMORY (A)
1"x4.342"



IN LOVING MEMORY (B)
1.9"x5.75"



IN MEMORY OF
1.36"x5.25"



LOVINGLY REMEMBERED
1.5"x5.16"



OUR BEST FRIEND
1.5"x5.171"



REMEMBERED ALWAYS
1.5"x5.35"

FIXED EMBLEMS

SCROLLS



REST IN PEACE
1"x5.125"



TILL WE MEET AGAIN (A)
1"x4.683"



TILL WE MEET AGAIN (B)
1.5"x5.27"



TOGETHER FOREVER (A)
1"x4.61"



TOGETHER FOREVER RINGS
2.55"x5"



WE'LL MEET AGAIN
1"x4.765"



TOGETHER FOREVER (B)
1.125"x5.28"



IN GOD'S LOVING CARE WREATH
3.263"x3.5"



IN LOVING MEMORY OF WREATH
3.258"x3.5"



TOGETHER FOREVER WREATH
2.446"x2.75"

FIXED EMBLEMS

SPORTS



BASEBALL PLAYER
5.35"x4.9"



BASEBALL
1.4"x1.3"



BASEBALL BATS
2.25"x1.9"



BOXING GLOVES
3.25"x2.95"



BOWLING
3.25"x3.5"



CURLING ROCK
1.5"x1.92"



DART BOARD
3"x3"



DARTS
3"x2.8"



FISHERMAN
8.25"x5.7"

FIXED EMBLEMS

SPORTS



GOLF BAG
3"x1.66"



GOLFER (A)
3"x2"



GOLFER (WOMAN)
3.5"x2"



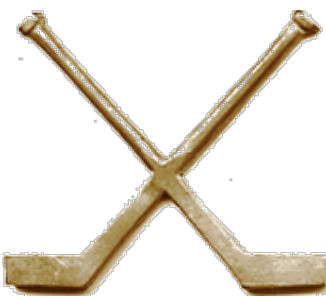
GOLFER & BALL
5.2"x3.367"



GOLF BALL & CLUBS
4"x3.5"



GOLFER (B)
3.75"x3.3"



HOCKEY STICKS
2.125"x2.4"



TENNIS RACKET
1.25"x4.25"



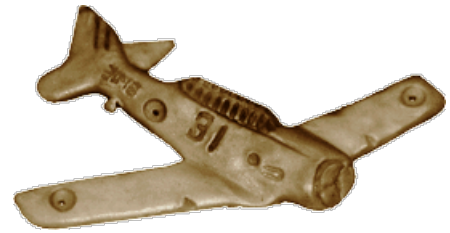
SKIS
2.75"x2.53"

FIXED EMBLEMS

TRANSPORTATION



COMMERCIAL JET
2.7"x6.8"



AIRPLANE (A)
1.9"x3.75"



BI-PLANE
1.426"x4"



AIRPLANE (C)
3.9"x5.5"



SPITFIRE
3.7"x4.176"



HELICOPTER
1.333"x4"



MOTORCYCLE (A)
1.75"x1.537"



DIRT BIKE
2"x2.1"



MOTORCYCLE (B)
4.92"x7"



MOTORCYCLE (C)
3"x5.2"

FIXED EMBLEMS

TRANSPORTATION



CAR (A)
2.17"x5.3"



CAR (B)
2.4"x6.5"



CAR (C)
1.75"x4"



JEEP
2.03"x3.75"



FIREBIRD
1.6"x5.5"



VW BEETLE
3"x4.75"



MOTORHOME
1.8"x4"



TUGBOAT
3.1"x5"



BOAT
1.4"x3.7"



SAILBOAT (B)
7.75"x7"



SAILBOAT (E)
5"x6.1"



SAILBOAT (D)
5.75"x3.93"

ENHANCED LINE INVENTORY

Enhanced Line Designs (Set Patterns/Handset)

Page 1 of 1

**Note - Fonts available are Flat and Oval (Handset Pattern Letters)
Computer fonts are not available.**

Size & Designs

Edges Available

8" x 12"

- Mountain Scene

Straight Cut

10" x 14"

- Monogram Rose

Polished Bevel

10" x 16"

- Monogram Rose

Polished Bevel

10" x 20"

- Bay Leaf

Polished Bevel

12" x 20"

- Bay Leaf
- Floral Vine
- Grape Vine
- Ivy
- Laurel Leaf
- Monogram Rose
- Mount Cheam
- Ocean & Harbour
- Rosary
- Sunset

Plain
Plain
Straight Cut
Plain & Hammered
Plain
Plain
Plain & Hammered
Plain & Hammered
Plain
Plain & Hammered

12" x 24"

- Ivy
- Mount Cheam
- Pine Cone
- Rosary

Plain & Hammered
Straight Cut
Plain & Hammered
Plain, Hammered & Straight Cut

13" x 36"

- Ivy
- Pine Cone
- Rosary

Plain & Hammered
Plain & Hammered
Plain & Hammered

13" x 44"

- Harmony
- Ivy
- Pine Cone
- Reflections
- Rosary

Straight Cut
Plain & Hammered
Plain & Hammered
Straight Cut
Plain & Hammered

14" x 24"

- Dogwood in Border
- Ivy
- Pine Cone

Hammered
Plain & Hammered
Plain & Hammered

16" x 28"

- Castles
- Laurel Leaf
- Monogram Rose
- Mount Cheam
- Rosary

Plain
Plain
Plain
Plain
Plain & Hammered

Please call or email us for sizes, designs and edges not shown on this list.

CUSTOM LINE INVENTORY

Custom Line Designs (Polymer)

Page 1 of 2

**Note - Fonts available are Flat (Computer Fonts)
Oval is not available.**

Size & Designs

Edges Available

8" x 12"

- Gothic
- Puritan
- Simplicity
- Stratford

Plain & Textured
Plain, Polished Bevel & Straight Cut
Plain, Hammered, Polished Bevel & Straight Cut
Plain, Polished Bevel & Straight Cut

9" x 12"

- Memorium
- Puritan
- Simplicity
- Stratford

Plain & Textured
Plain, Rock, Polished Bevel & Straight Cut
Plain, Rock, Polished Bevel & Straight Cut
Plain, Rock, Polished Bevel & Straight Cut

9" x 18"

- Prairie Wheat
- Puritan
- Simplicity
- Stratford

Plain & Hammered
Plain, Hammered, Polished Bevel & Straight Cut
Plain, Hammered, Polished Bevel & Straight Cut
Plain, Hammered, Polished Bevel & Straight Cut

10" x 14"

- Gothic
- Maple Cluster
- Puritan
- Simplicity
- Stratford

Plain
Polished Bevel
Polished Bevel & Straight Cut
Polished Bevel & Straight Cut
Polished Bevel & Straight Cut

10" x 16"

- Gothic
- Puritan
- Simplicity
- Stratford
- Water Wonderland

Plain
Plain, Hammered, Polished Bevel & Straight Cut
Plain, Hammered, Polished Bevel & Straight Cut
Plain, Hammered, Polished Bevel & Straight Cut
Polished Bevel

10" x 22"

- Gothic
- Memorium
- Puritan
- Simplicity
- Stratford

Plain & Rock
Plain & Hammered
Plain, Hammered, Polished Bevel & Straight Cut
Plain, Hammered, Polished Bevel & Straight Cut
Plain, Hammered, Polished Bevel & Straight Cut

12" x 20"

- Georgian
- Gothic
- Puritan
- Simplicity
- Stratford
- Ivy
- Maple Cluster
- Prairie Wheat
- Water Wonderland

Plain
Plain
Plain, Hammered, Woodgrain, Greek, Polished Bevel & Straight Cut
Plain, Hammered, Rock, Woodgrain, Greek, Leaf, Polished Bevel & Straight Cut
Plain, Hammered, Woodgrain, Greek, Polished Bevel & Straight Cut
Plain & Hammered
Plain & Hammered
Plain & Hammered
Plain

12" x 24"

- Gothic
- Maple Cluster
- Memorium
- Prairie Wheat
- Puritan
- Serenity
- Simplicity
- Stratford
- Water Wonderland

Plain
Plain & Hammered
Plain
Plain & Hammered
Plain, Hammered, Rock, Pine, Woodgrain, Polished Bevel & Straight Cut
Plain
Plain, Hammered, Rock, Pine, Woodgrain, Polished Bevel & Straight Cut
Plain, Hammered, Rock, Pine, Woodgrain, Polished Bevel & Straight Cut
Plain & Hammered

13" x 32"

- Simplicity

Pine, Polished Bevel & Straight Cut

13" x 36"

- Maple Cluster
- Prairie Wheat
- Puritan
- Simplicity

Plain & Hammered
Plain & Hammered
Plain & Straight Cut
Plain, Hammered, Pine, Woodgrain, Polished Bevel & Straight Cut

CUSTOM LINE INVENTORY

Custom Line Designs (Polymer)

Page 2 of 2

**Note - Fonts available are Flat (Computer Fonts)
Oval is not available.**

13" x 44"

- Eternal Love N/S Hampered
- Eternal Peace Plain, Hampered & Folksau
- Maple Cluster Plain & Hampered
- Prairie Wheat Plain & Hampered
- Puritan Straight Cut
- Simplicity Plain, Hampered, Pine, Folksau, Polished Bevel & Straight Cut
- Winston Plain, Hampered & Straight Cut

14" x 24"

- Maple Cluster Plain & Hampered
- Prairie Wheat Plain & Hampered
- Puritan Plain, Hampered, Pine, Woodgrain, Polished Bevel & Straight Cut
- Simplicity Plain, Hampered, Pine, Woodgrain, Polished Bevel & Straight Cut
- Stratford Plain, Hampered, Pine, Woodgrain, Polished Bevel & Straight Cut

16" x 28"

- Farm Scene Polished Bevel
- Georgian Plain & Hampered
- Gothic Plain & Hampered
- Heavenly Gate Plain & Hampered
- Maple Cluster Plain & Hampered
- Maple Leaf Border Plain
- Memorium Plain
- Prairie Wheat Plain & Hampered
- Puritan Plain, Hampered, Rock, Woodgrain, Folksau, Polished Bevel & Straight Cut
- Simplicity Plain, Hampered, Rock, Woodgrain, Folksau, Polished Bevel & Straight Cut
- Stratford Plain, Hampered, Rock, Woodgrain, Folksau, Polished Bevel & Straight Cut
- Water Wonderland Plain

16" x 56"

- Simplicity Plain, Hampered, Polished Bevel & Straight Cut
- Winston Straight Cut

18" x 24"

- Puritan Plain, Hampered, Polished Bevel & Straight Cut
- Simplicity Plain, Hampered, Polished Bevel & Straight Cut
- Stratford Plain, Hampered, Polished Bevel & Straight Cut

24" x 16"

- Eternal Blossom Straight Cut
- Puritan Plain, Hampered, Woodgrain, Folksau, Polished Bevel & Straight Cut
- Simplicity Plain, Hampered, Woodgrain, Folksau, Polished Bevel & Straight Cut
- Stratford Plain, Hampered, Woodgrain, Folksau, Polished Bevel & Straight Cut
- Tudor Dogwood Hampered
- Tudor Maple Leaf Hampered
- Tudor Pine Hampered
- Tudor Rose Hampered
- Tudor Simplicity Hampered
- Tudor Wheat Hampered
- Water Wonderland Polished Bevel

30" x 24"

- Devotion Straight Cut
- Puritan Plain, Hampered, Folksau, Polished Bevel & Straight Cut
- Simplicity Plain, Hampered, Folksau, Polished Bevel & Straight Cut
- Stratford Plain, Hampered, Folksau, Polished Bevel & Straight Cut
- Winston Straight Cut

Please call or email us for sizes, designs and edges not shown on this list.

OBRONZE.COM

ORNAMENTAL BRONZE LIMITED

2800 Olafsen Avenue, Richmond, BC V6X 2R3
 Email: sales@obronze.com
 Telephone: 604-273-9055
 Facsimile: 604-273-9058

ORDER FORM

(OBRONZE TO ASSIGN ORDER NUMBER)

DATE: _____

PO#: _____

SHIP VIA: _____

DEALER: _____

SHIP TO: _____

INSCRIPTION: PLEASE PRINT CAREFULLY

SAMPLE ORDER FORM
 PLEASE CONTACT US FOR
 A DIGITAL COPY

- EXACT MATCH** (The marker needs to be an exact match to existing marker)
Additional charges may apply
- LOOSE MATCH** (Font, font size & spacing & background texture can vary slightly)
- LAYOUT** (Please check if a layout is needed for approval before casting)

COMMENTS _____

NAME OF CEMETERY _____

LOCATION IN CEMETERY _____

ORDERED BY _____

FOR OFFICE USE ONLY

SHIPPED VIA	DATE	WEIGHT
-------------	------	--------

HANDSET

POLYMER

DESIGN	
SIZE	_____ (H) X _____ (W)
EDGE DESIGNS	
Straight Cut Edge	
Polished Bevel Edge	
Plain Edge	
Hammered Edge	
Rock Edge	
Pine Edge	
Wood Grain Edge	
Folksau Edge	
COLOUR	
Light Brown (standard)	
Dark Brown	
Black	
Other (please specify):	
TEXTURES	
Smooth	
Leatherette	
Stipple	
FONTS	
Roman/Flat	
Oval/Round	
Other (please specify):	
FASTENERS	
Glued	
Screws (C-C ")	
Cement/Concrete	
Granite/Marble	
VASE (please specify)	

CRESTS & EMBLEMS

INDICATOR	DESCRIPTION
X	
XX	
XXX	
OTHER (please specify):	

IN THE MAKING

Your product is handmade in Canada by a team of skilled and passionate trades people dedicated to providing you with a high quality and meticulously crafted memorial plaque.



CONTACT US

Phone: (604) 273-9055
Fax: (604) 273-9058
Tollfree: 1 (800) 273-9080

Mailing Address:
2800 Olafsen Avenue
Richmond, BC
V6X 2R3

General Email:
sales@obronze.com



Office Manager:
Angela Ash
angelaash@obronze.com

Layout Specialists:
Alma Dzinic
alma@obronze.com



Erin O' Sullivan
erin@obronze.com

Kori Addams
kori@obronze.com

Invoice Inquiries:
accounting@obronze.com



www.obronze.com

Visit our website to access our new online memorial designer
as well as a larger selection of emblems!



OBRONZE.COM
ORNAMENTAL BRONZE LIMITED